



THE SOLUTION



The TrapLine Network Pump™ is a technology which provides a demonstrably secure method for assuring one-way transfer of data across networks.

The current trends with computer systems and interconnectivity have resulted in a continuing and on-going need to provide high-security protected data transfers. Most existing high-security systems are large-scale cross-domain solutions which can be costly, in addition to being dependant and restrictive to the types of applications, data, and network architectures involved.

To address this problem, SSA offers a method for providing increased computer security through the use of the TrapLine Network Pump™ solution and a library of custom wrappers.

PROVEN TECHNOLOGY



TrapLine Network Pump is currently in use at several federal agencies.

Assures data transfer between two networks is one-way only.

Serves several applications at once, and can be used in multi-level distributed architecture where data transfer occurs across trusted and non-trusted networks.

SEQUESTERED SOLUTIONS ALASKA

TrapLine



BENEFITS



- Certified by the National Security Agency (NSA)
- Application-independent
- Cost-effective Solution

FEATURES



Via secure acknowledgements, applications on lower security networks are allowed to transfer data to those on a higher security network with the guarantee that the information is successfully received, and without compromising data that is resident on the high-security side

Phone: (907) 868-8678

Fax: (907) 868-8978

E-mail: lara@sequesteredolutions.com

www.sequesteredolutions.com

Sequestered Solutions, Alaska, LLC

801 B Street

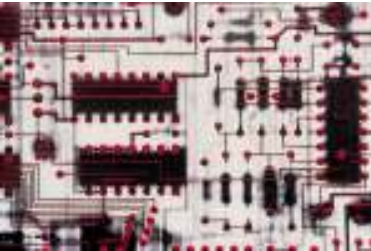
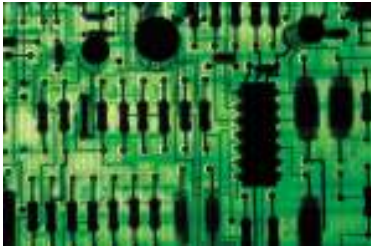
Suite 102

Anchorage, AK 99501

DATA INTEGRITY



CONFIDENTIALTY



▶ Specifications

DIMENSIONS	19" RACK MOUNTABLE 1U CHASSIS
POWER	STANDARD 120-240 VOLTS AC, 1AMP INPUT, FREQUENCY 47-63HZ WITH INTERNAL BATTERY
LOW AND HIGH LAN INTERFACES	802.3 ETHERNET, SUPPORTS IPV4 TCP/IP 100 BASE/T (RJ45) TO LAN ENCLAVES
DATA THROUGHPUT	5MBIT/SEC TO 20MBIT/SEC NETWORK TRANSFER 100MBIT/SEC
DATA TYPES	NO LIMITATIONS ON DATA TYPES
DATA RECOVERY	RESUMES DATA TRANSFER AFTER NETWORK ANAOMALY WITH NO LOSS OF DATA
CONNECTIONS	1 TRANSMISSION/1 RECEPTION 1 POWER (25W, 12V, 2AMPS)
INDICATOR LIGHTS	HEALTH STAUUS INDICATOR BATTERY CHARGE INDICATOR POWER INDICATOR
SELF-TESTS	FULL OPERATIONAL DIAGNOSTIC TEST UPON POWER-UP
ADMINISTRATOR WORK-STATION INTERFACE	RS-232 SERIAL CONNECTION TO STAND-ALONE TERMINAL
OPERATING SYSTEMS SUPPORTED (LOW AND HIGH SIDE)	MICROSOFT WINDOWS 2003 MICROSOFT WINDOWS 2003 SP2 REDHAT LINUX ES v4 REDHAT LINUX ES v5 SUN SOLARIS OE 9.0 SUN SOLARIS OE 10.0
SERVER REQUIREMENTS	PENTIUM 4 OR EQUIVALENT FOR WINDOWS OR LINUX SPARC FOR SOLARIS 512 MBYTES MEMORY 1 GBYTE OF FREE HARD DISK STORAGE



**S E Q U E S T E R E D
S O L U T I O N S
A L A S K A**

Phone: (907) 868-8678
Fax: (907) 868-8978
E-mail:
lara@sequesteredolutions.com
www.sequesteredolutions.com

Sequestered Solutions, Alaska, LLC
801 B Street
Suite 102
Anchorage, AK 99501